

1. Modify the Code, change the port (Such as 1500)

```
TCP_SERVER TcpServer={
    1500, /* port */
    -1, /* socket */
    0, /* state */
    0, /* connect */
    do_echo/* CallBackFun */
};
```

```
/*
   Demo2 for X-Server Light.
   Supports one server for TCP port 10001

   test with XS_09201.LIB
*/
#include<conio.h>
#include<stdio.h>
#include"module.h"

#define _SHOW_IP_ADDRESS_

void do_echo( int skt , int mode);
#define BUFSIZE 1460 /* read/write buffer size */

TCP_SERVER TcpServer={
    1500, /* port */
    -1, /* socket */
    0, /* state */
    0, /* connect */
    do_echo/* CallBackFun */
};

/* for xs_09001.lib ~ xs_09003.lib need the next line.
int TcpServerNumber=sizeof(TcpServer)/sizeof(TCP_SERVER);
*/
unsigned char MyIp[4];
long LedTime;
```

2. Rebuild the project again.

```

File Edit Search Run Compile Debug Project Options Window Help
1SERUER.C
#include<stdio.h>
#include"module.h"
#define _SHOW_IP_A
void do_echo< int
#define BUFSIZE 14
TCP_SERVER TcpServ
1500, /* p
-1, /*
0, /*
18:1

```

Linking

EXE file : 1SEVER.EXE
 Linking : \BC\LIB\CL.LIB

Lines compiled:	Total	Link
Warnings:	4006	PASS 2
Errors:	4	0
	0	0

Available memory: 2026K

Success : Press any key

File name	Code	Data
1SERUER.C	772	3203
7188EL.LIB	n/a	n/a
TCPPIP32.LIB	n/a	n/a
XS_09313.LIB	n/a	n/a

```

F1 Help Alt-F8 Next Msg Alt-F7 Prev Msg Alt-F9 Compile F9 Make F10 Menu

```

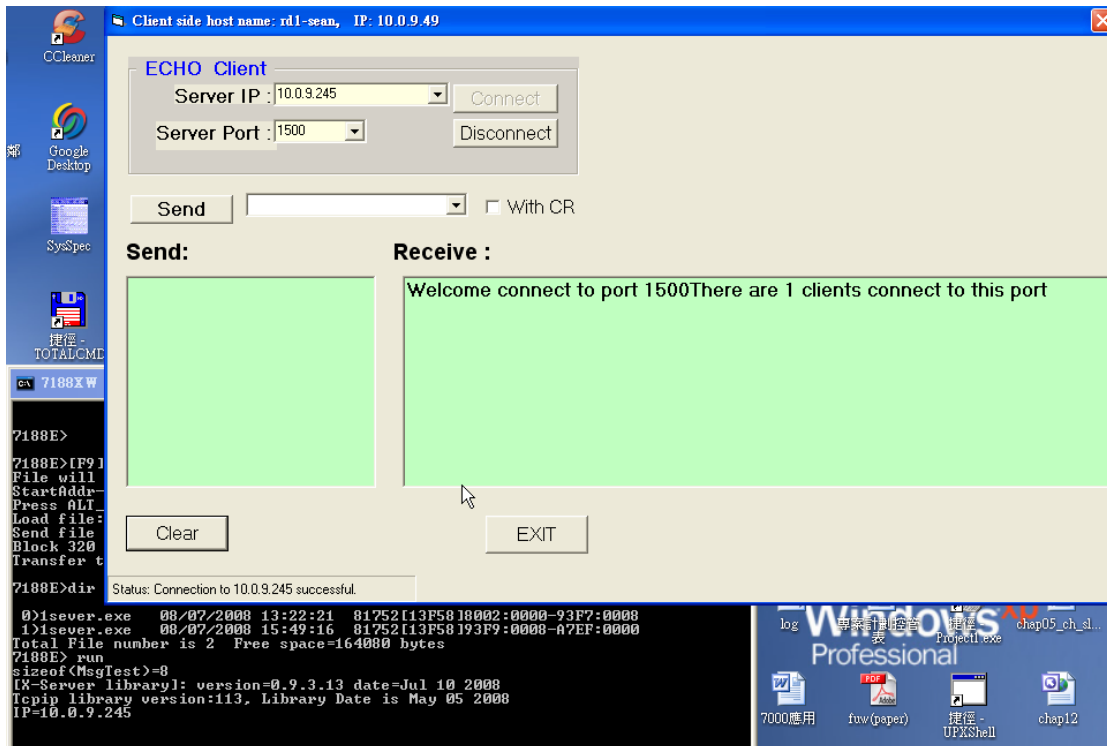
3. Download the 1sever.exe to 7188EX and run this program.

```

7188E>
7188E>[F9]LOAD
File will save to 93F7:0008
StartAddr-->9000:3F77
Press ALT_E to download file!
Load file:1sever.exe[crc=39E4,0000]
Send file info. total 320 blocks
Block 320
Transfer time is: 18.063000 seconds
7188E>dir
 0>1sever.exe  08/07/2008 13:22:21  81752[13F5818002:0000-93F7:0008
 1>1sever.exe  08/07/2008 15:49:16  81752[13F58193F9:0008-A7EF:0000
Total File number is 2 Free space=164080 bytes
7188E> _

```

4. Run client4.exe and input the IP address and Port on the text box (The IP address of 7188EX is 10.0.9.245 and port is 1500), If the connection is established and the client will receive a message (Welcome connect to port 1500 There.....)



5. Input 12345 on “Send” Combox, and click Send button to send this string to 7188EX
 The 7188EX receives this string and print it to COM and response this string back.

