

## User's Manual for 7188EA VB Demo

There have three blocks on the program, which are "Server Connection", "Digital Output" and "Digital Input". The default status of the three blocks is disabled.

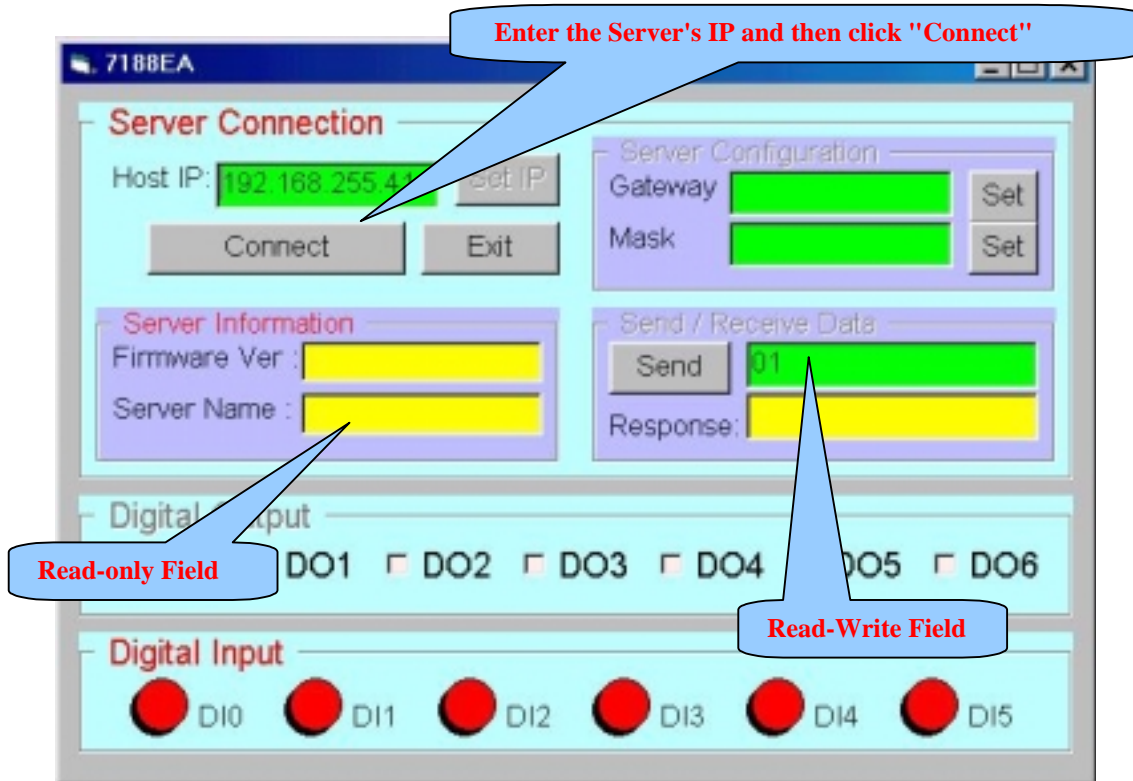
The "Server Connection" is used to access the host server while the "Digital Output" and "Digital Input" are used to access the Digital Input/ Output.

The field with green color is for read-write purpose while the field with yellow color is read-only.

### Connect to Server

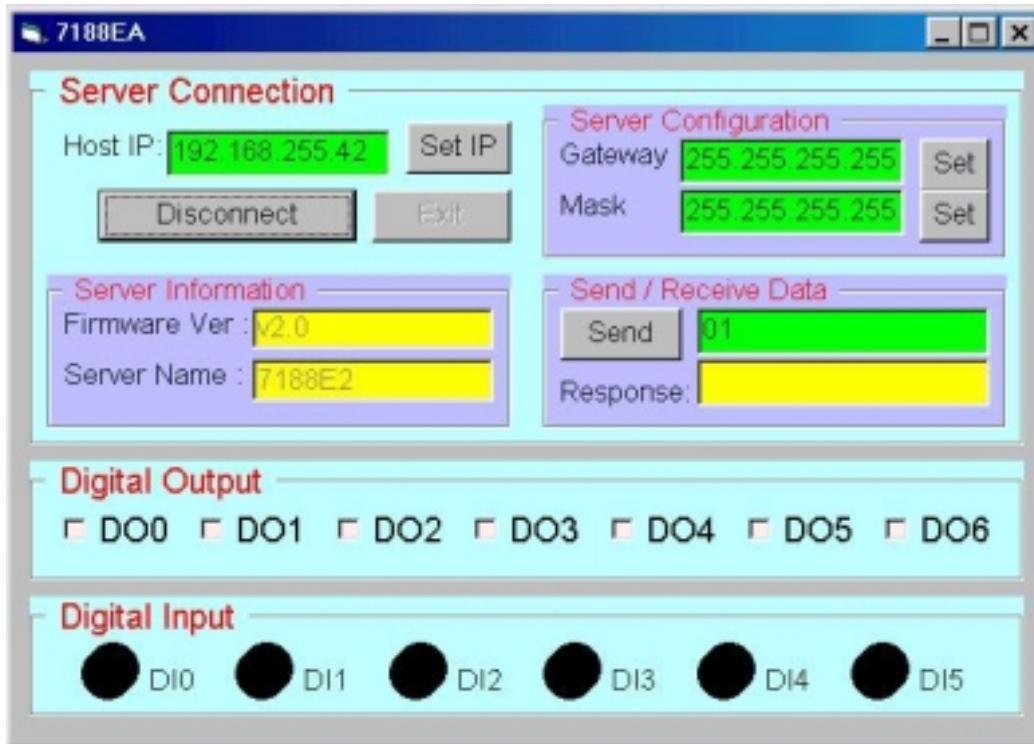
Step 1. Enter the IP address of the host server in the "Host IP" field.

Step 2. Click the "Connect" button to connect to the server.



The program shows up the information about the Server, after it had connected. These information includes [Firmware Version](#), [Server Name](#), [Gateway](#) and [Sub-net Mask](#).

The "[Connect](#)" button changes to "[Disconnect](#)" when connecting successful else it stays in "[Connect](#)".



## Setting New IP Address to Server

Step 1. Change the IP address of the "Host IP" field.

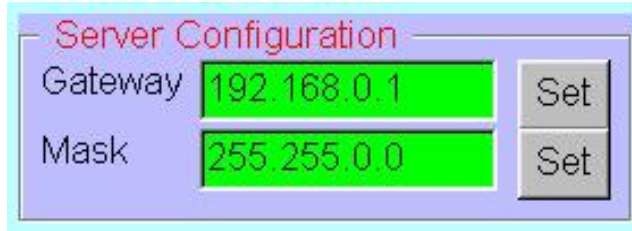
Step 2. Click the "Set IP" button.



## Setting New Gateway and Mask

Step 1. Change the IP address of "Gateway" field and click the "Set" button.

Step 2. Change the Sub-Net Mask of "Mask" field and click the "Set" button.

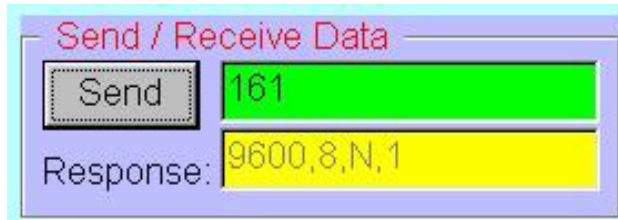


## Send / Receive Data

Step 1. Enter the command/data string on the field.

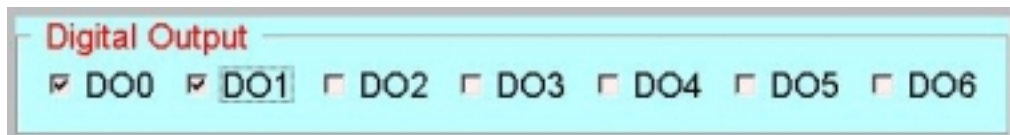
Step 2. Click the "Send" button.

The "Response" field then shows up the return string from the Server.



## Digital Output

Just click on the checkbox to setting the related bit's status (High or Low) of DO.



## Digital Input

The program shows up the DI status automatically after connected to the Server.

