

User's Manual for 7188E2 VB/BCB/Delphi Demo

There have three blocks on the program which are "Server Connection", "Server / COM1" and "Server / COM2". The default status of the three blocks is disabled.

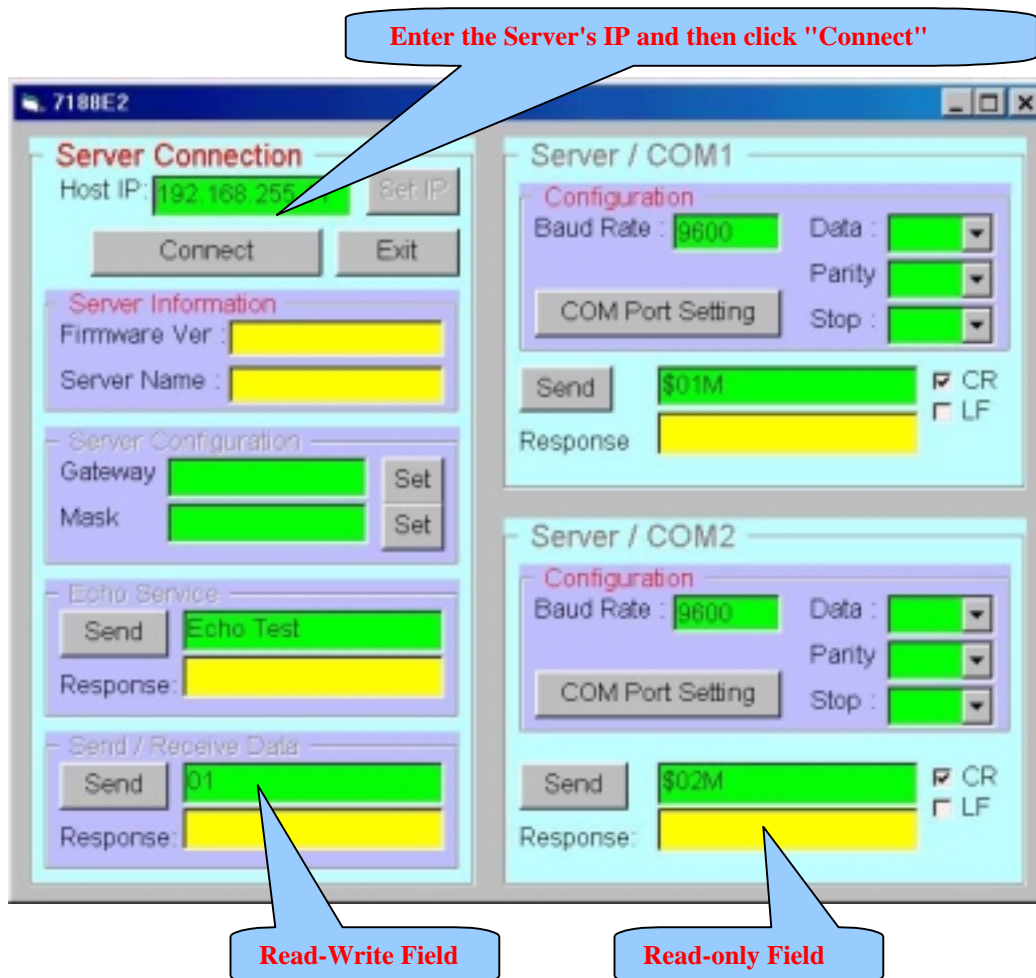
The "Server Connection" is used to access the host server while the "Server / COM1" and "Server / COM2" are used to access the COM ports of the server.

The field with green color is for read-write purpose while the field with yellow color is read-only.

Connect to Server

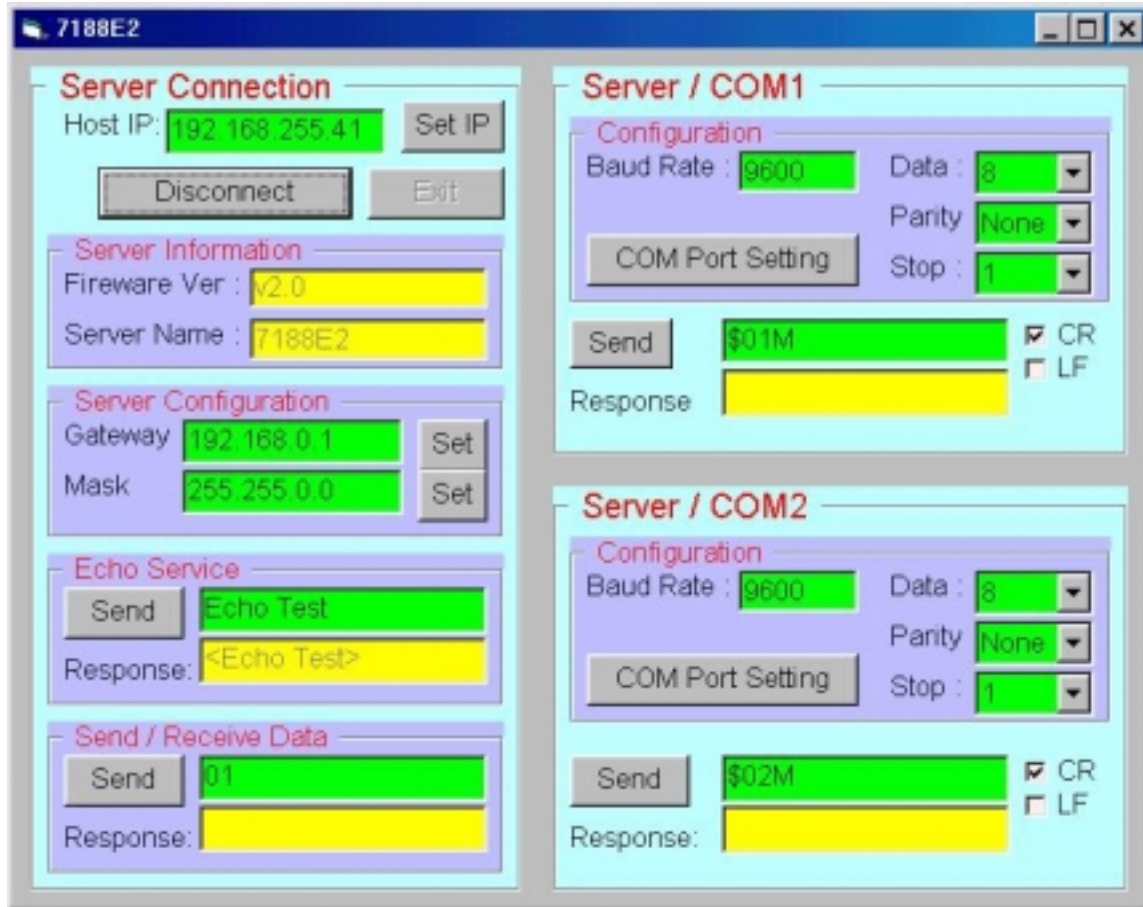
Step 1. Enter the IP address of the host server in the "Host IP" field.

Step 2. Click the "Connect" button to connect to the server.



The program shows up the information about the Server, after it had connected. These information includes [Firmware Version](#), [Server Name](#), [Gateway](#), [Sub-net Mask](#), COM port's [Baud-Rate](#), [Data-Bits](#), [Parity Bits](#) and [Stop-Bits](#).

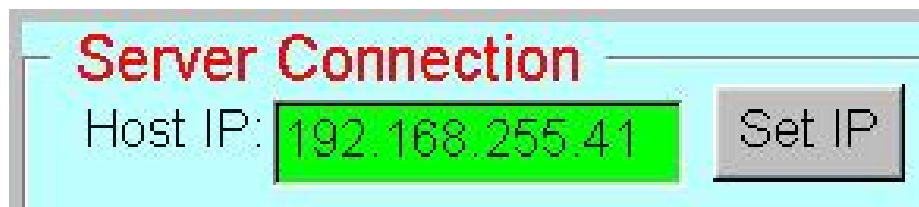
The "[Connect](#)" button changes to "[Disconnect](#)" when connecting successful else it stays in "[Connect](#)".



Setting New IP Address to Server

Step 1. Change the IP address of the "Host IP" field.

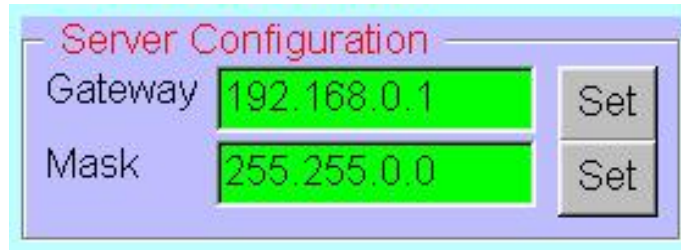
Step 2. Click the "Set IP" button.



Setting New Gateway and Mask

Step 1. Change the IP address of "Gateway" field and click the "Set" button.

Step 2. Change the Sub-Net Mask of "Mask" field and click the "Set" button.



Echo Service

Step 1. Change the string on the field.

Step 2. Click the "Send" button.

The "Response" field then shows up the return string (echo) from the Server.

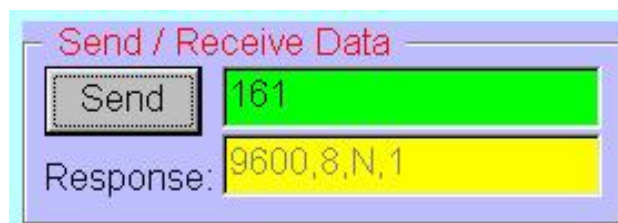


Send / Receive Data

Step 1. Enter the command/data string on the field.

Step 2. Click the "Send" button.

The "Response" field then shows up the return string from the Server.



COM port setting

Step 1. Enter the baud-rate on the "Baud Rate" field.

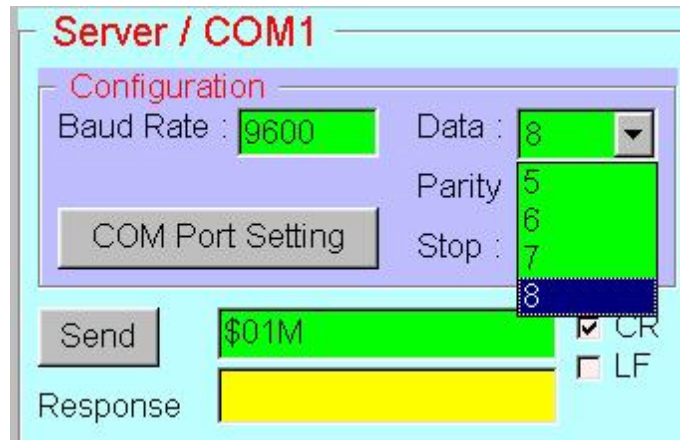
Step 2. Select the Data bits on the "Data" Field.

Step 3. Select the Parity bits on the "Parity" Field.

Step 4. Select the Stop bits on the "Stop" Field.

Step 5. Click the "COM Port Setting" button to setting the COM port.

It will shows the "OK" message box twines. One for baud-rate and one for data-format.



Send (/Receive) Command to (/from) COM port

Step 1. Enter the command/data on the field.

Step 2. Check the "CR" ("LF") checkbox if need.

For I-7000 series modules, please check the "CR".

("CR" stands for "Carriage Return" and "LF" stands for "Line Feed".)

Step 3. Click the "Send" button to send out.

The "Response" field then shows up the return string from the Server.

