



Quick Start Guide for I-7188E Converter

September 2012, Version 1.0.1

Congratulations!

Congratulations on purchasing I-7188E - the most popular automation solution for remote monitoring and control application. This Quick Start Guide will provide information needed to get started. Please also consult the User Manual for detailed information on the setup and use of I-7188E. This guide covers the following models:

I-71881, I-7188E2, I-7188E3, I-7188E3-232, I-7188E4, I-7188E5, I-7188E5-485, I-7188E8

What's in the Box?

In addition to this guide, the package includes the following items:



I-7188E Converter



Software Utility CD



RS-232 Cable
(CA-0910)



Screw Driver
(1C016)

Technical Support

- **I-7188E Reference Document**
CD:\NAPDOS\7188e\Document\
<ftp://ftp.icpdas.com/pub/cd/8000cd/napdos/7188e/document/>
- **I-7188E Website**
http://www.icpdas.com/products/PAC/i-7188_7186/7188EN_converter.htm

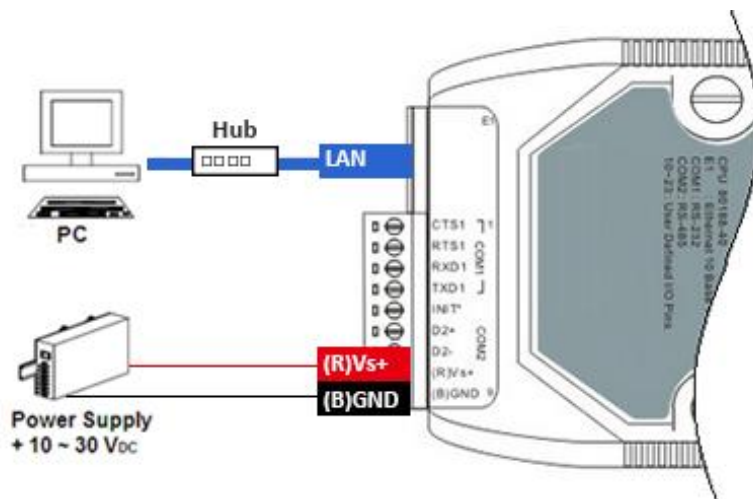
1 Starting the I-7188E up and Wiring it to a PC

Step 1: Connect to a +10 ~ +30 V_{DC} power supply

- i. +Vs of the I-7188E should be connected to the positive of the power supply.
- ii. GND of the I-7188E should be connected to the negative of the power supply.

Step 2: Connect to a PC

Ethernet port of the I-7188E should be connected to a PC via a hub by using an Ethernet cable.



2 Installing the Tools and Utilities

Step 1: Install the MiniOS7 Utility



The MiniOS7 Utility can be obtained from companion CD or our FTP site:
CD:\Napdos\minios7\utility\minios7_utility\
ftp://ftp.icpdas.com/pub/cd/8000cd/napdos/minios7/utility/minios7_utility/

Step 2: Install the VxComm Utility



The VxComm Utility can be obtained from companion CD or our FTP site:
CD:\Napdos\Driver\VxComm_Driver\
ftp://ftp.icpdas.com/pub/cd/8000cd/napdos/driver/vxcomm_driver/

3 Using MiniOS7 Utility to Assign an IP Address

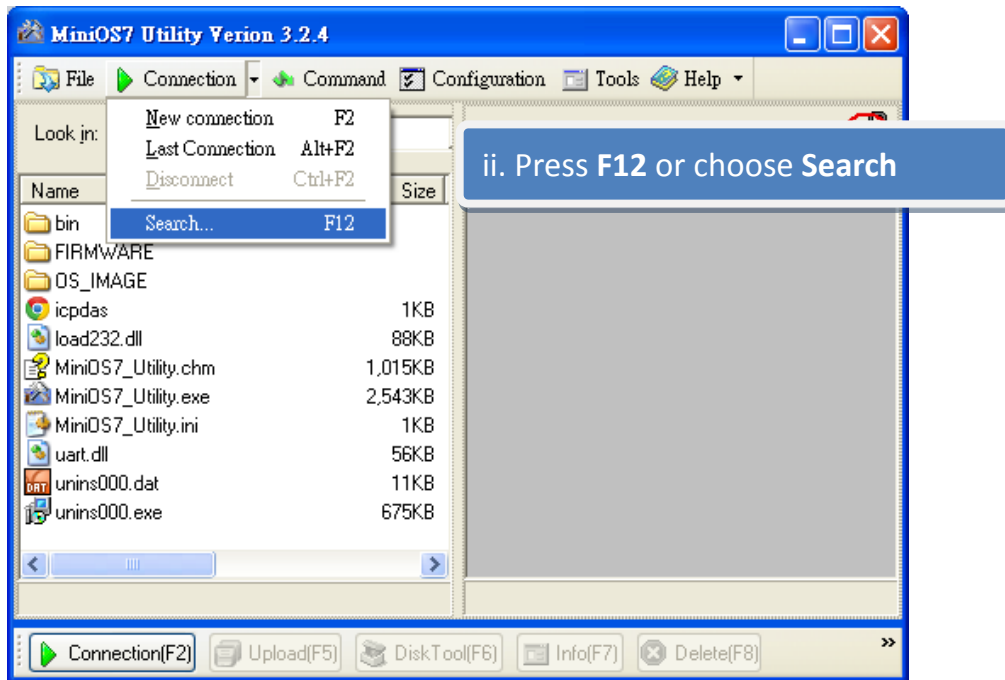
MiniOS7 Utility can be used to configure the IP address. Before starting the configuration process, make sure that the **I-7188E** are used to connect to your network. The default IP addresses are as follows:

Item	Default
IP Address	192.168.255.1
Subnet Mask	255.255.0.0
Gateway	192.168.0.1

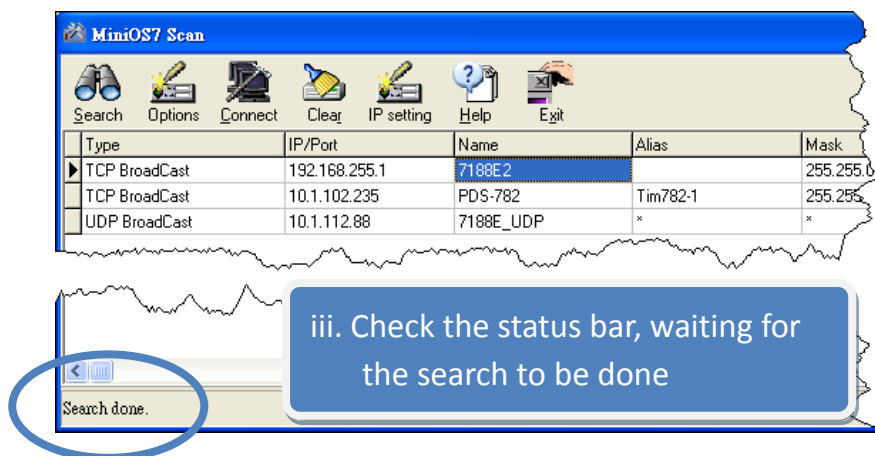
Step 1: Run the MiniOS7 Utility, and then search the I-7188E



- i. Double-click the **MiniOS7 Utility** shortcut on your desktop.
- ii. Press **F12** or choose **Search** from the **Connection** menu.

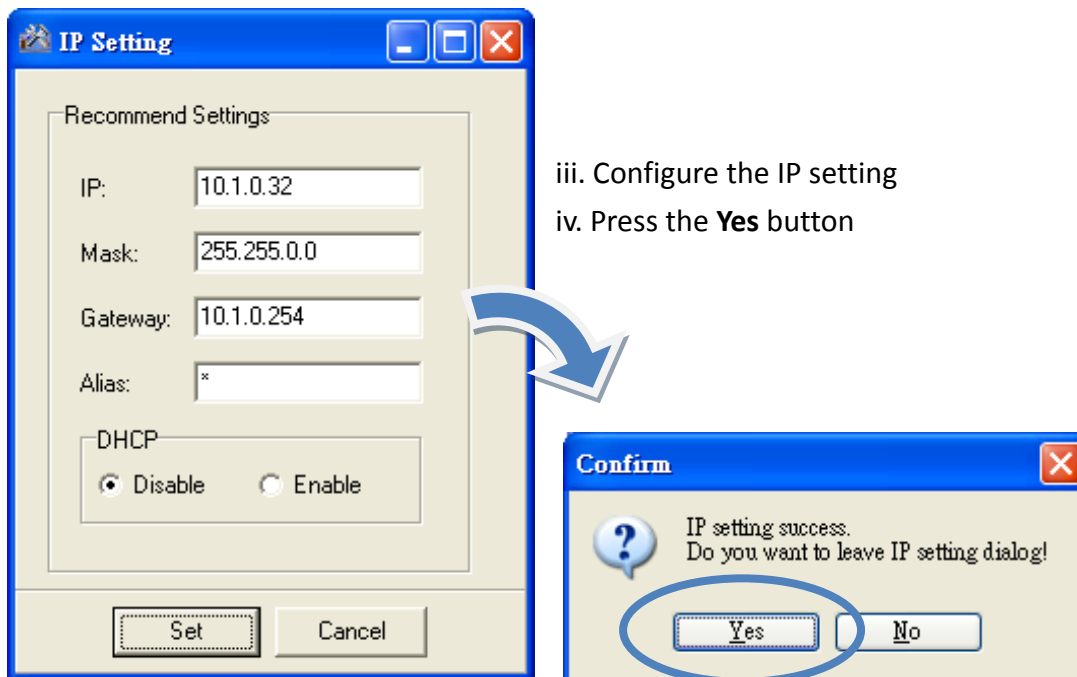
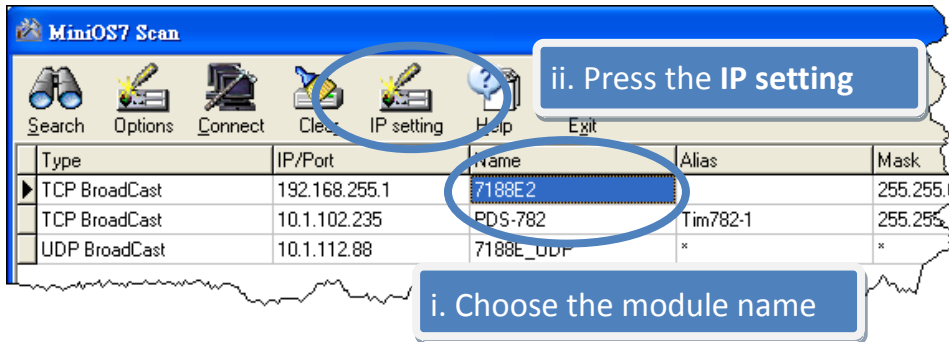


- iii. Check the status bar of the **MiniOS7 Scan** dialog, waiting for the search to be done.



Step 2: Configure the IP Address

- i. Choose the module name from the column.
- ii. Press the **IP setting** from the toolbar, and then assign the new IP address

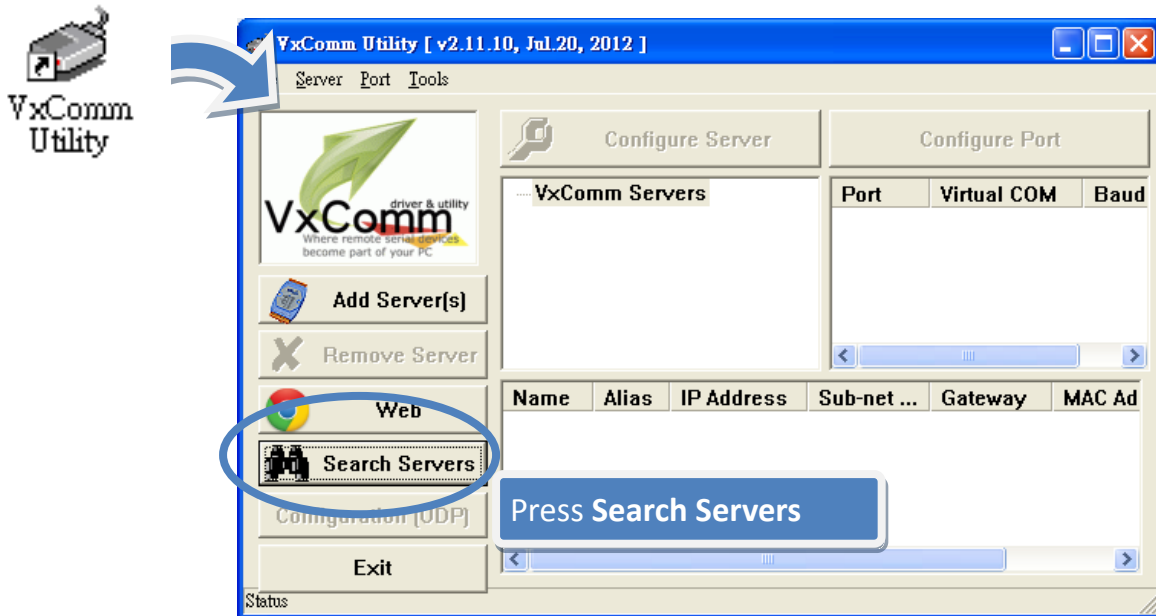


4 Using VxComm Utility to Create Virtual COM Ports

The VxComm Utility is a PC-based tool that can be used to create virtual COM port(s) and map them to the COM port(s) of the PDS/8000E/7188E.

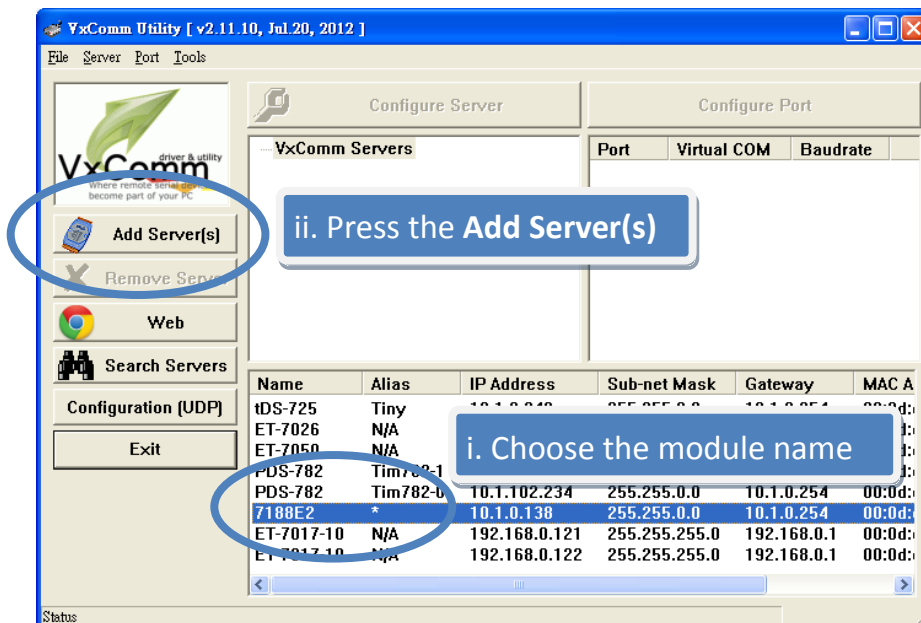
Step 1: Run the VxComm Utility and search the I-7188E

- i. Double-click the **VxComm Utility** shortcut on your desktop.
- ii. Press the **Search Servers** button from the toolbar.

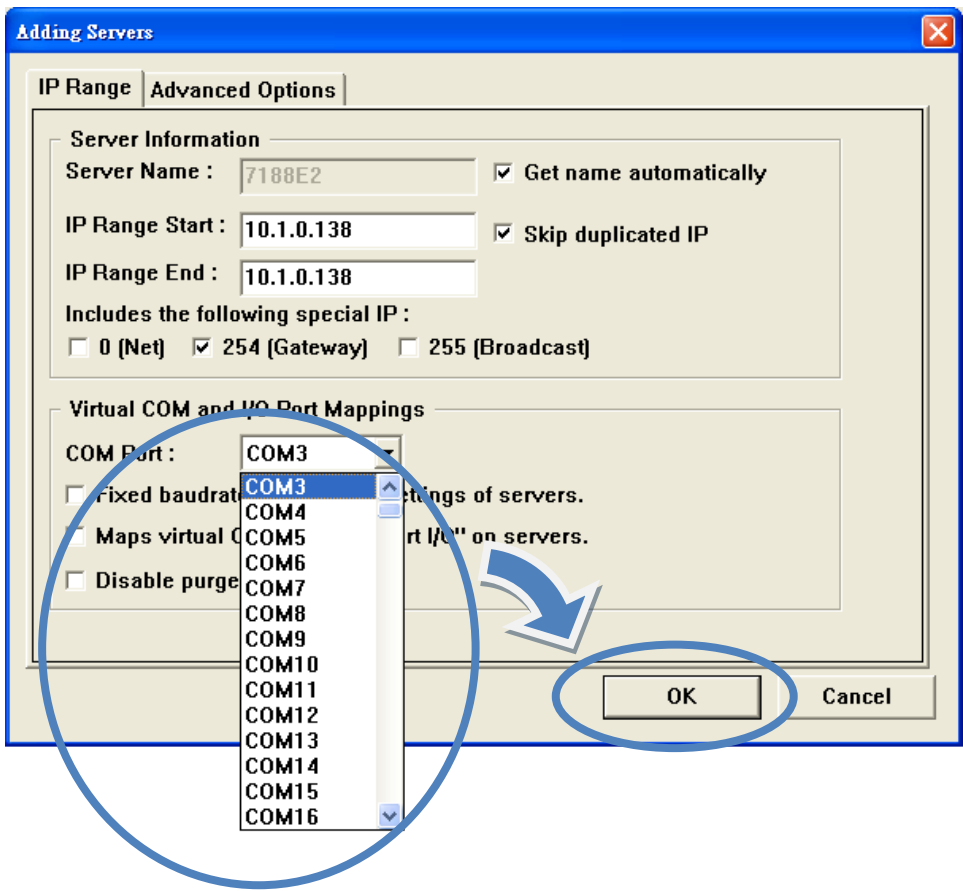


Step 2: Add the I-7188E server

- i. Choose the module name from the column.
- ii. Press the **Add Server(s)** from the toolbar

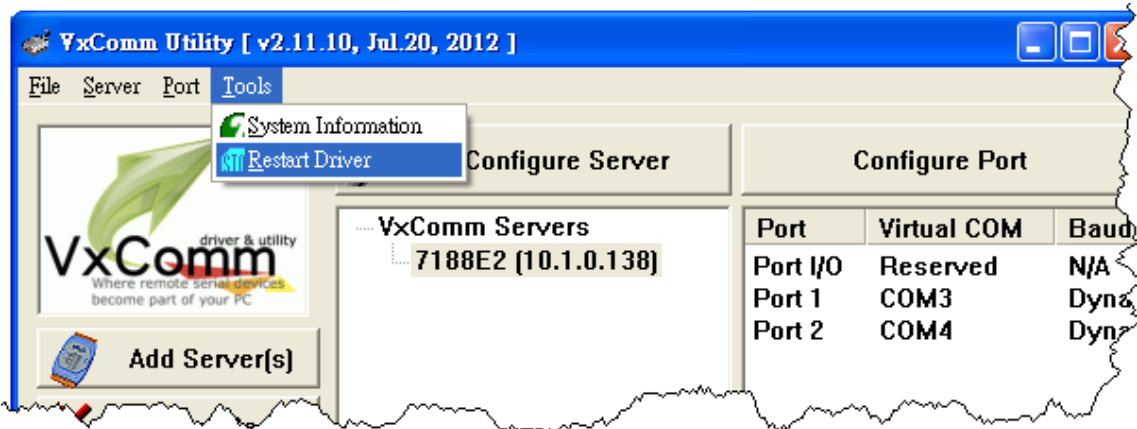


iii. Assign a valid COM port, and then press **OK** button



Step 3: Restart the driver to take effect

i. Choose **Restart Driver** from the **Tools** menu.



ii. Press the **Restart Driver** button



Additional Information

After you have finished add the virtual Com port to your system, then you can start using it to connect remote RS-232/RS-422/RS-485 device via Ethernet.

Here are some guideline and tips related to the I-7188E.

- **7188E series Software User Manual**

CD:\Napdos\7188e\Document\7188Ess.pdf

<ftp://ftp.icpdas.com/pub/cd/8000cd/napdos/7188e/document/7188ess.pdf>

- **7188E series Hardware User Manual**

CD:\Napdos\7188e\Document\7188Ehh.pdf

<ftp://ftp.icpdas.com/pub/cd/8000cd/napdos/7188e/document/7188ehh.pdf>

- **VxComm Utility User Manual**

CD:\Napdos\Driver\VxComm_Driver>manual\

ftp://ftp.icpdas.com/pub/cd/8000cd/napdos/driver/vxcomm_driver/manual/