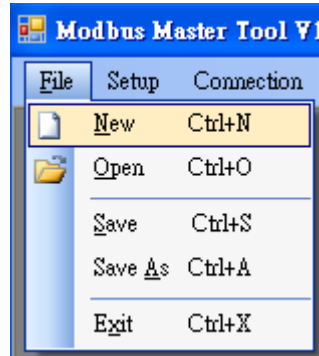


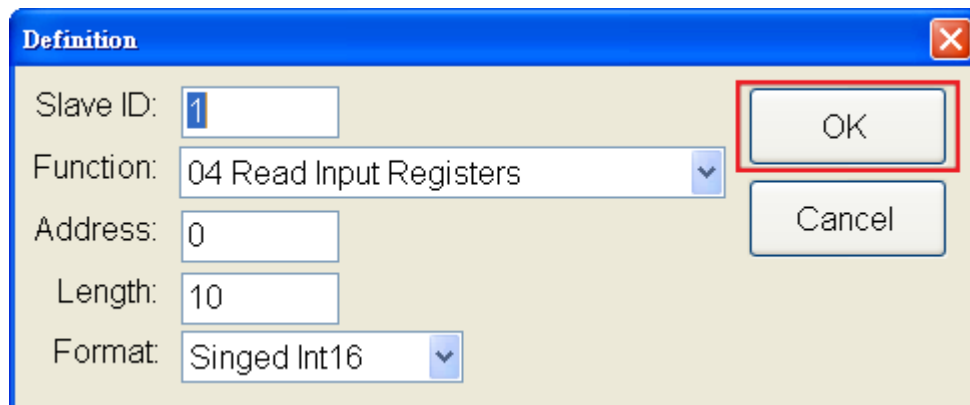
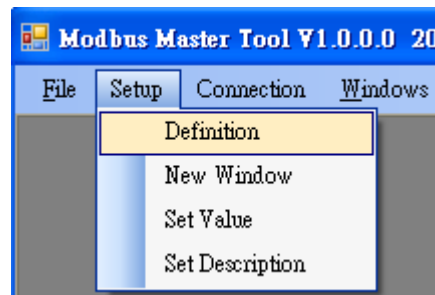
Modbus Master Tool Quick Start

V1.0.0 2010/10/13

Step1. Open a new file



Step2. Select [Definition] to set parameter and then click [OK]

A screenshot of the 'Definition' dialog box. It contains the following fields and controls:

- Slave ID:
- Function: - Address:
- Length:
- Format: - OK button (highlighted with a red box)
- Cancel button

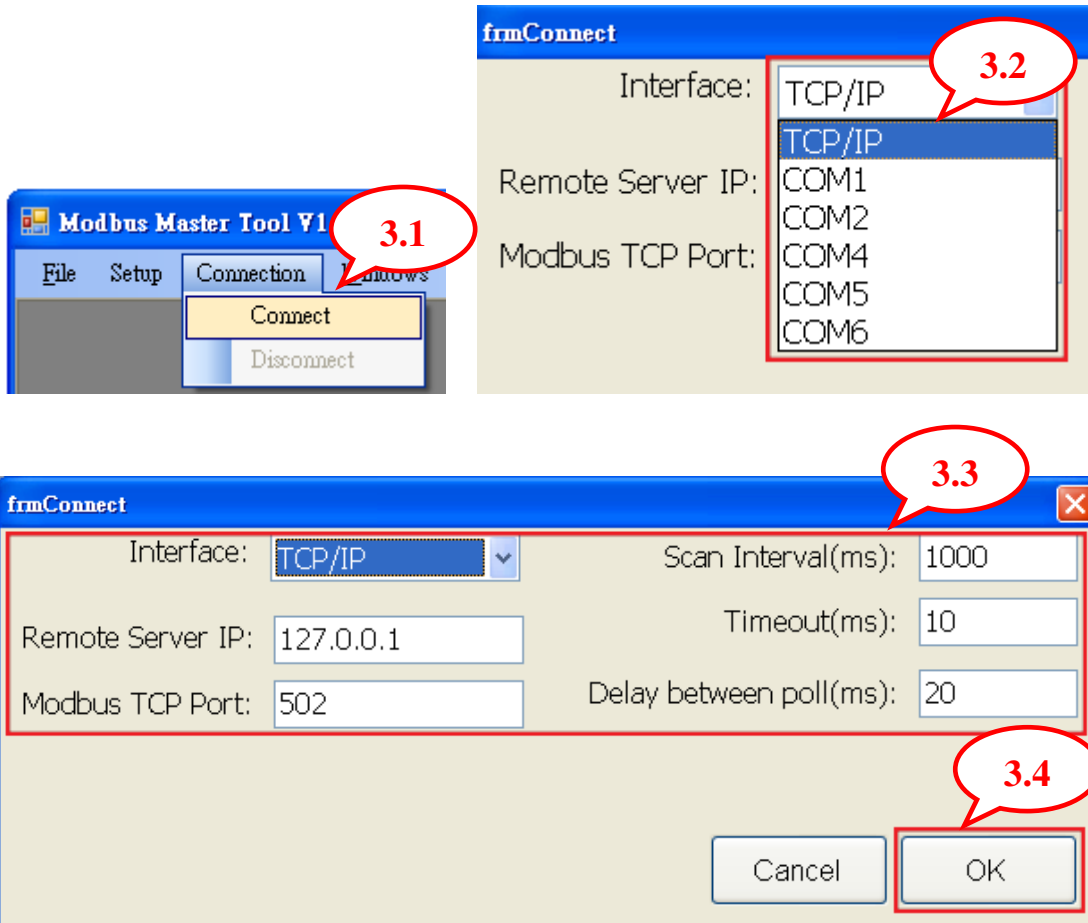
Step3. Set TCP connection

3.1 Select [connection]

3.2 Press [Interface] and then select [TCP/IP] to connect

3.3 Set the parameter of connection

3.4 Click [OK]



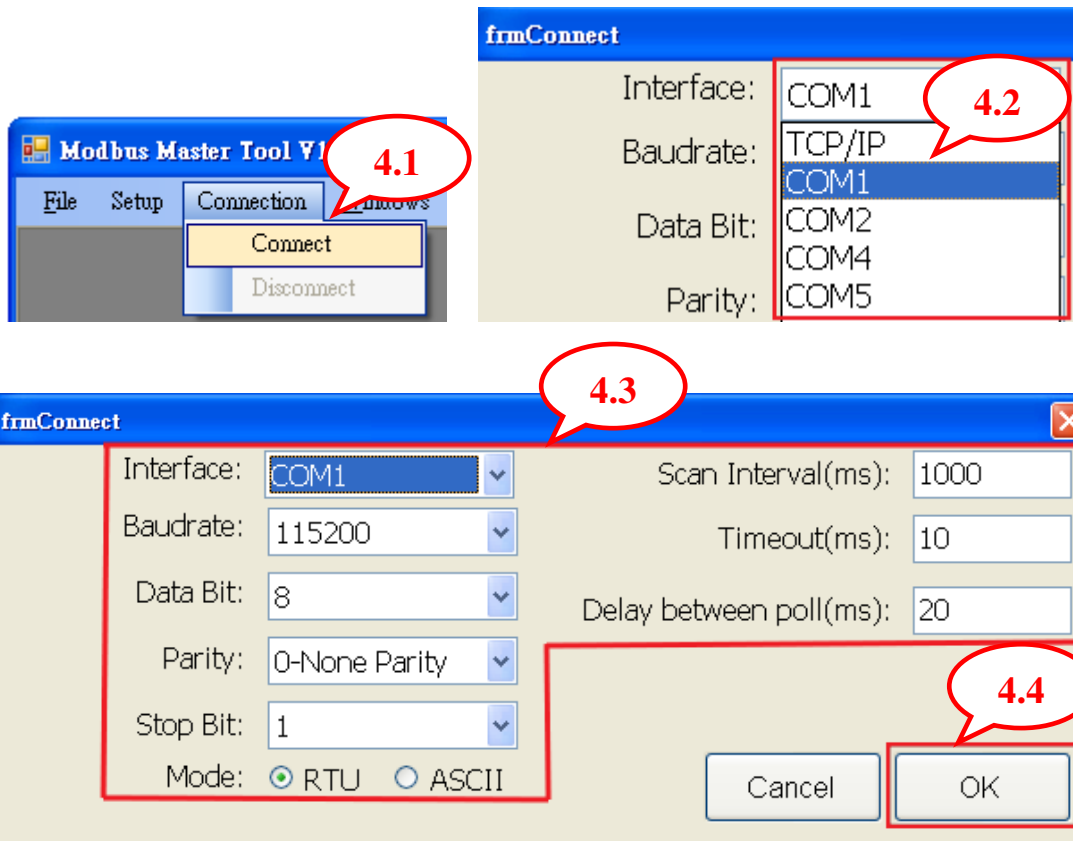
Step4. Set Serial connection

4.1 Select [connection]

4.2 Press [Interface] and then select [COM] to connect

4.3 Set the parameter of connection

4.4 Click [OK]



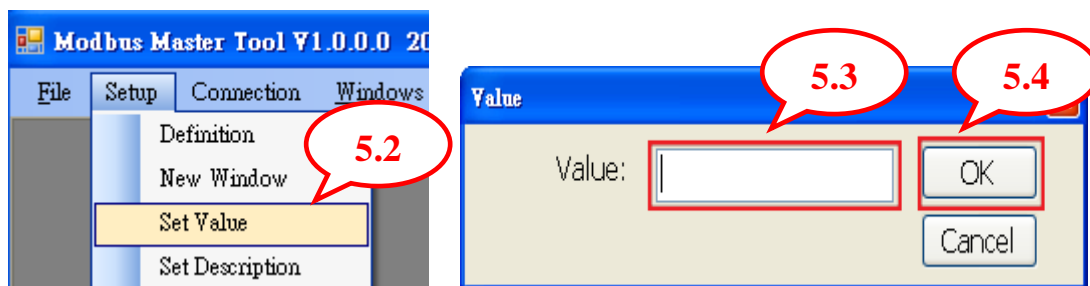
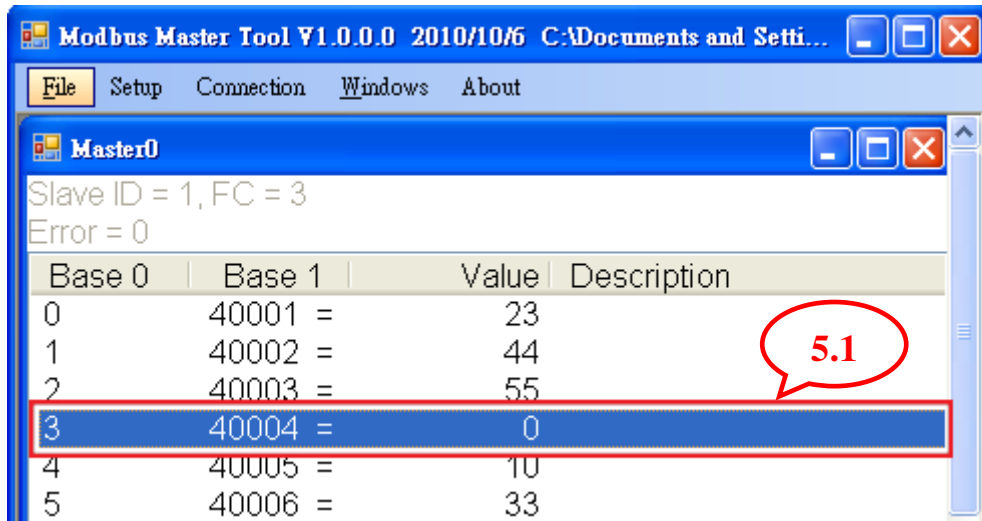
Step5. Set [Holding Register] and [Coil Status] value

5.1 Select the address

5.2 Click [Set Value]

5.3 Key in the value

5.4 Click [OK]



Step6. Save file and Save as another file

6.1 Select [File] and then click [Save] to save file

6.2 Select [File] and then click [Save As] to save as another file

