

Classification	PET7H16M Utility FAQ				No.	1-001	
Author	Eric/Anna	Version	1.0.0	Date	2019/10/31	Page	1/2

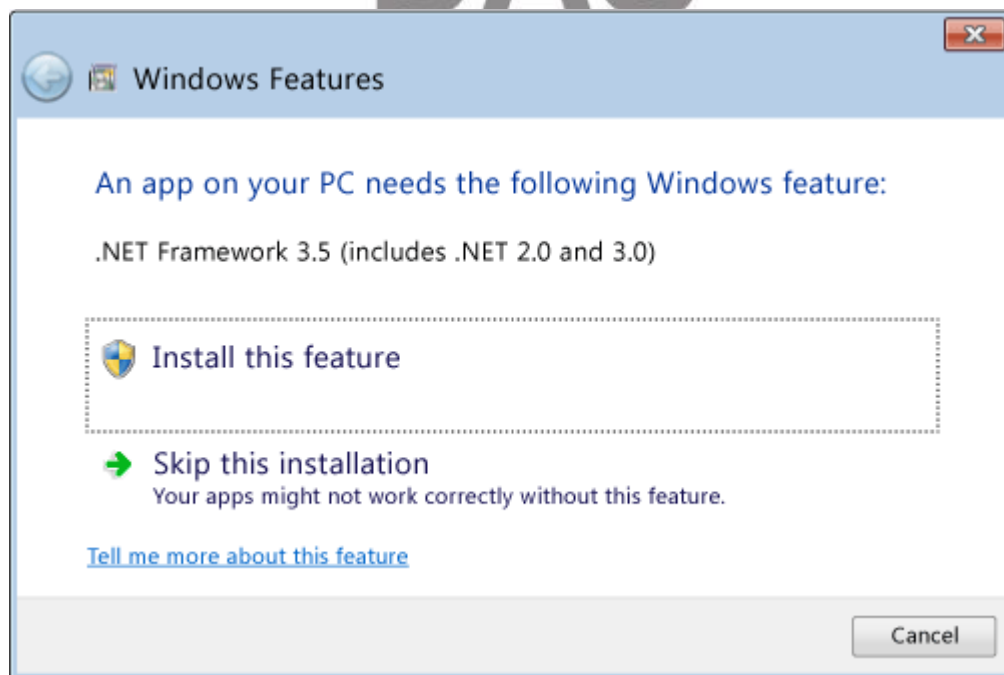
How to enable Microsoft .NET Framework 3.5 or newer on your operating system?

<i>Applies to:</i>		
Platform	OS version	PET7H16M Utility Version
PC	Windows 8	All Versions
	Windows 8.1	
	Windows 10	

In order to use PET7H16 Utility, Microsoft .NET Framework 3.5 Feature (which includes .NET Framework 2.0 and .NET Framework 3.0) needs to be enabled.


Installing .NET Framework 3.5 on demand

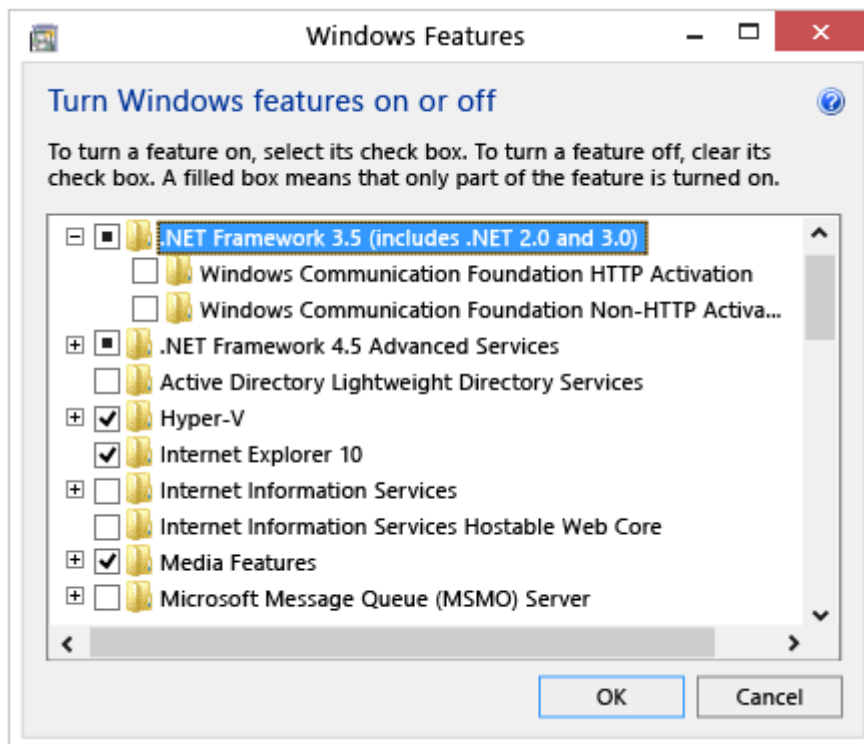
You may see the following configuration dialog if you try to run the PET7H16 Utility that requires the .NET Framework 3.5. Choose **Install this feature** to enable the .NET Framework 3.5. This option requires an Internet connection.



Classification	PET7H16M Utility FAQ				No.	1-001	
Author	Eric/Anna	Version	1.0.0	Date	2019/10/31	Page	2/2

To enable Microsoft .NET Framework 3.5 (which includes .NET Framework 2.0 and .NET Framework 3.0), complete the instructions listed below for your particular operating system:

1. Press the Windows key **Windows**  on your keyboard, type "**Windows Features**", and press **Enter**. The **Turn Windows features on or off** dialog box appears.
2. Select the **.NET Framework 3.5 (includes .NET 2.0 and 3.0)** check box, select **OK**, and reboot your computer if prompted.



You don't need to select the child items for **Windows Communication Foundation (WCF) HTTP Activation** and **Windows Communication Foundation (WCF) Non-HTTP Activation** unless you're a developer or server administrator who requires this functionality.

For more detailed information about how to troubleshoot installation problems, refer to <https://docs.microsoft.com/en-us/dotnet/framework/install/dotnet-35-windows-10>